

CHAPTER 41

Circulatory and Excretory Systems
Section 41-1

SKILL ACTIVITY
Labeling a diagram

H.O #12

Key

Analyzing the Human Heart

Your heart is only slightly larger than your fist, yet it is more powerful, durable, and hard-working. Its job is to pump blood to the lungs and to all of the body tissues. In this activity you will use a diagram of the heart to analyze the way in which the heart works.

1. Using the following word list, label the various parts of the heart on the diagram.

Right ventricle
Left ventricle
Upper vena cava
Lower vena cava
Aorta

Left atrium
Right atrium
Tricuspid valve
Bicuspid valve
Septum

Right pulmonary arteries
Left pulmonary arteries
Right pulmonary veins
Left pulmonary veins
semilunar valve

a. SUPERIOR (ANTERIOR/UPPER)
VENA CAVA

b. (R) PULM. ARTERIES

c. (R) PULM. VEINS

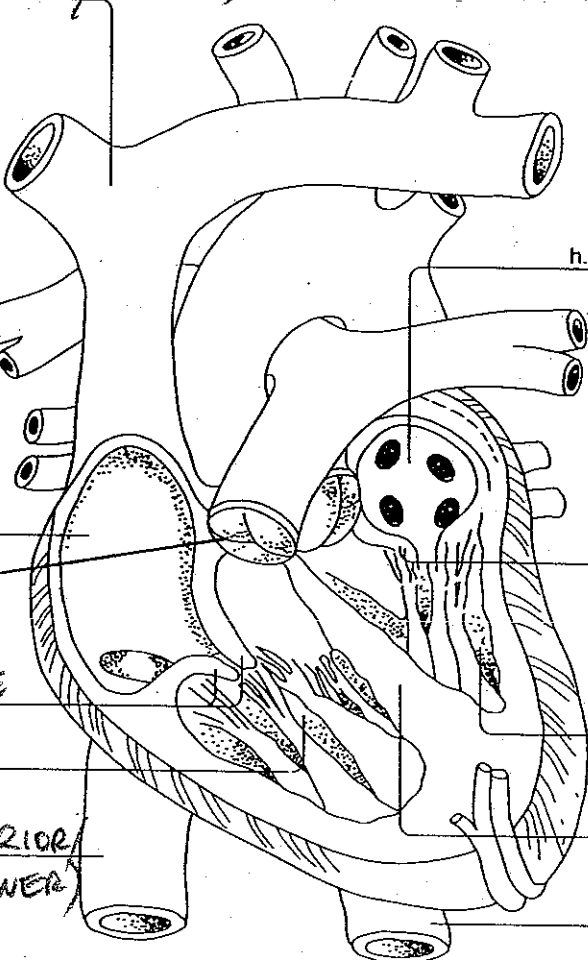
d. Right Atrium

e. semilunar valve

f. TRICUSPID VALVE

g. (R) VENTRICLE

h. INFERIOR (POSTERIOR/LOWER)
VENA CAVA



i. (L) ATRIUM

j. (L) PULM. ARTERIES

k. (L) PULM. VEINS

l. BICUSPID VALVE

m. (L) VENTRICLE

n. SEPTUM

o. AORTA